



National Institute for Earth Physics - Magurele

Seismic report - manual

Event local time: Sat Sep 24,2016 02:11:20

Romania - Event 23231120 - Vrancea seismic zone

Fri Sep 23, 2016 23:11:20 GMT ML 5.3 N45.71 E26.62 Depth: 91.6km ID:23231120

Seismicity of Romania - latest large earthquakes in Vrancea

Date	Time	Lon	Lat	Depth	Mw
22-Nov-2014	19:14:17	45.87	27.15	40.9	5.4
06-Oct-2013	01:37:21	45.67	26.58	135.1	5.2
25-Apr-2009	17:18:48	45.68	26.62	109.6	5.4
18-Jun-2005	15:16:41	45.72	26.66	153.7	5.2
14-May-2005	01:53:21	45.64	26.53	148.5	5.5
27-Oct-2004	20:34:36	45.84	26.63	105.4	6.0
06-Apr-2000	00:10:38	45.75	26.64	143.4	5.0
28-Apr-1999	08:47:56	45.49	26.27	151.1	5.3
31-May-1990	00:17:47	45.85	26.91	86.9	6.4
30-May-1990	10:40:06	45.83	26.89	90.9	6.9

Source: ROMPLUS Catalogue

Romania – Event 23231120 – Vrancea seismic zone

Attenuation laws – GMPE::VS10 IPE::VS04_msk

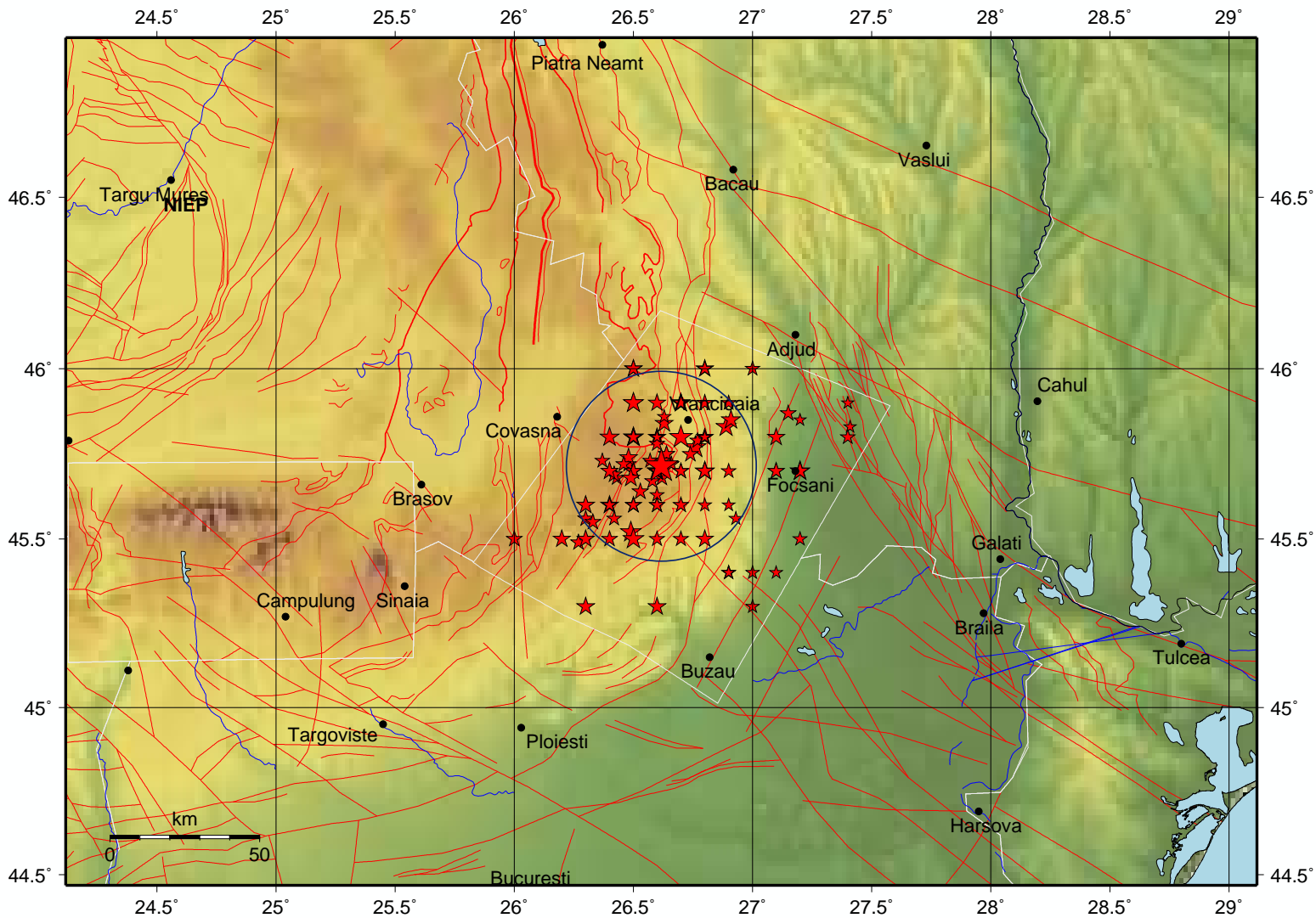
Max. grid values – pga: 2.1504(%g) pgv: 1.4306(cm/sec) mi: 4.4

Fri Sep 23, 2016 23:11:20 GMT ML 5.3 N45.71 E26.62 Depth: 91.6km ID:23231120 **Mw 4.9**

Local time

Sat Sep 24, 2016 02:11:20

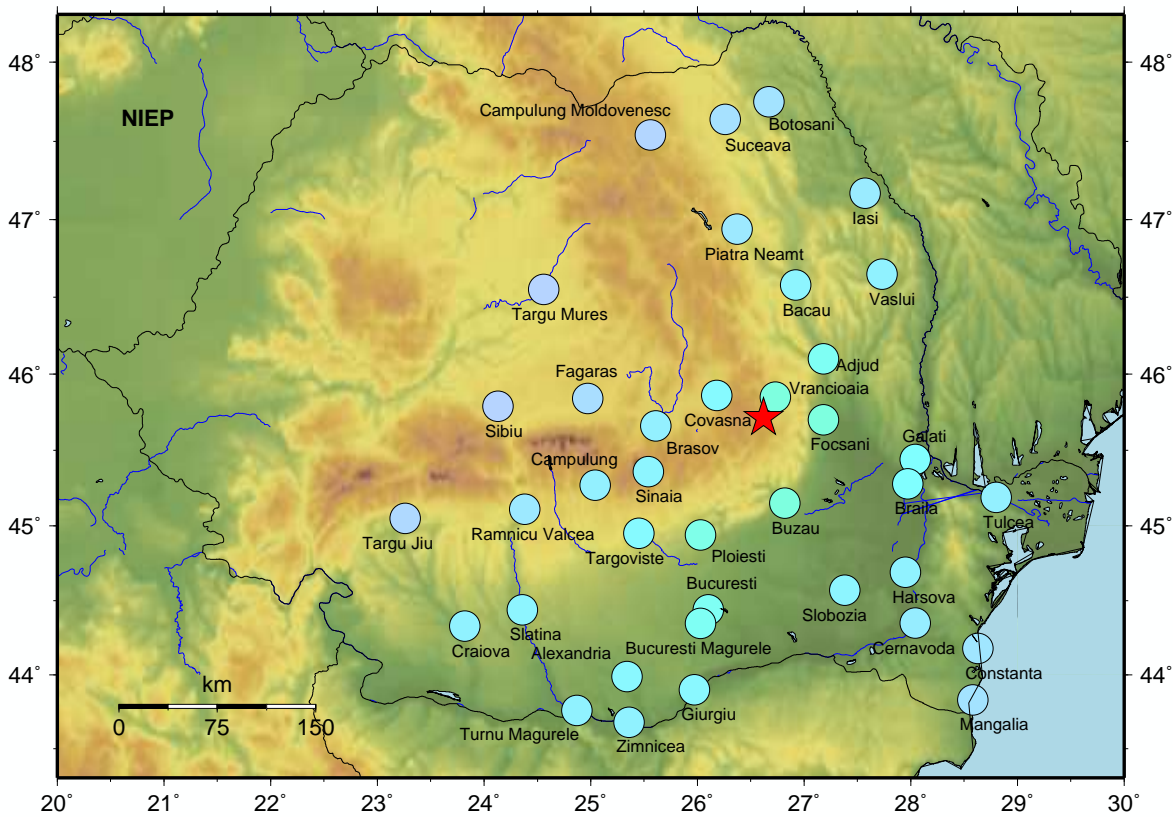
Fault lines



Estimated intensities based on IPE::VS04_msk attenuation law

Epicentral intensity: IV-V

Fri Sep 23, 2016 23:11:20 GMT ML 5.3 N45.71 E26.62 Depth: 91.6km ID:23231120



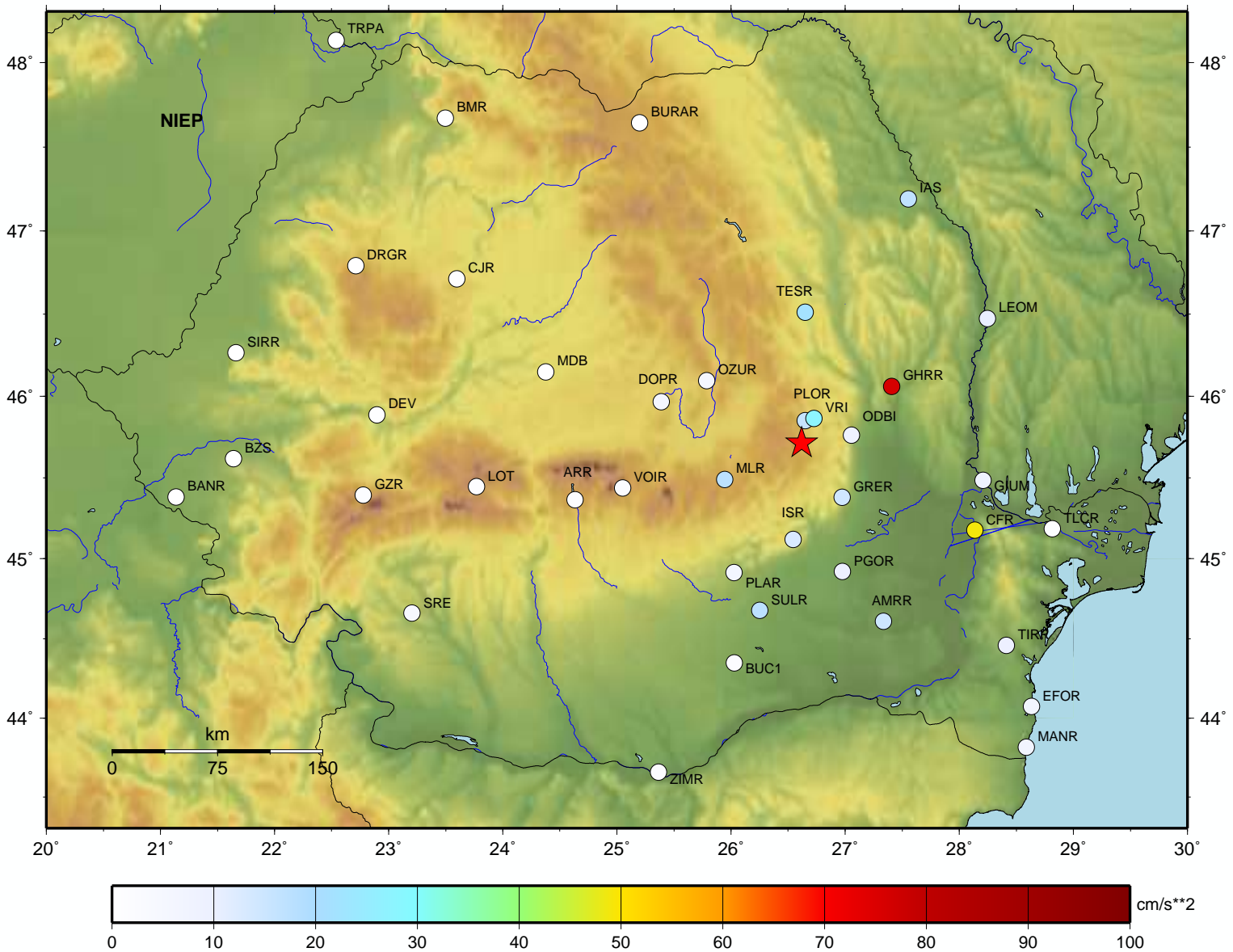
City	Distance(km)	Intensity
Vrancioaia	17	IV-V
Covasna	37	IV
Focsani	43	IV-V
Adjud	61	IV
Buzau	64	IV-V
Brasov	78	III-IV
Sinaia	92	III-IV
Ploiesti	97	IV
Bacau	99	III-IV
Galati	115	IV
Braila	116	IV
Targoviste	124	IV
Fagaras	128	II-III
Campulung	132	III-IV
Vaslui	134	III-IV
Piatra Neamt	137	III
Slobozia	140	III-IV
Bucuresti	147	IV
Harsova	154	III-IV
Bucuresti Magurele	158	IV
Iasi	177	III
Tulcea	180	III-IV
Targu Mures	184	II-III
Ramnicu Valcea	187	III
Cernavoda	188	III-IV
Sibiu	193	II-III
Giurgiu	208	III-IV
Suceava	215	III
Alexandria	216	III-IV
Campulung M.	218	II-III
Botosani	226	III
Slatina	227	III-IV
Constanta	233	III
Zimnicea	247	III-IV
Turnu Magurele	257	III-IV
Mangalia	260	III
Craiova	268	III-IV
Targu Jiu	273	II-III

PERCEIVED SHAKING	Not felt	Weak	Light	Moderate	Strong	Very strong	Severe	Violent	Extreme
POTENTIAL DAMAGE	none	none	none	Very light	Light	Moderate	Moderate/Heavy	Heavy	Very Heavy
INSTRUMENTAL INTENSITY	I	II-III	IV	V	VI	VII	VIII	IX	X+

Observed stations accelerations – Antelope platform (cm/sec**2)

Maximum observed acceleration: GHRR_HHE 76.1658

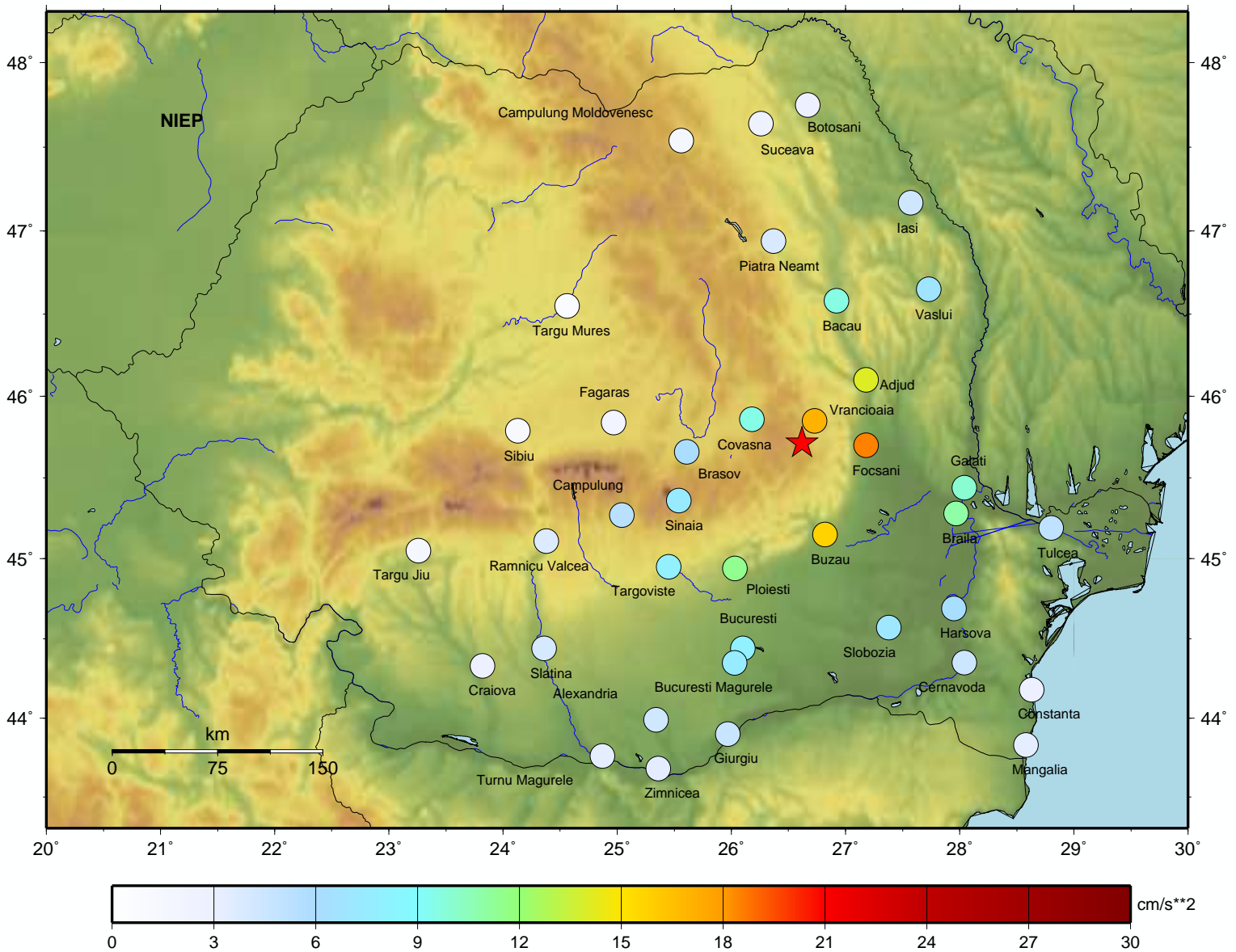
Fri Sep 23, 2016 23:11:20 GMT ML 5.3 N45.71 E26.62 Depth: 91.6km ID:23231120



Estimated accelerations based on GMPE::VS10 attenuation law

Maximum grid acceleration: 21.0954 (cm/sec**2); magnitude bias: -0.26

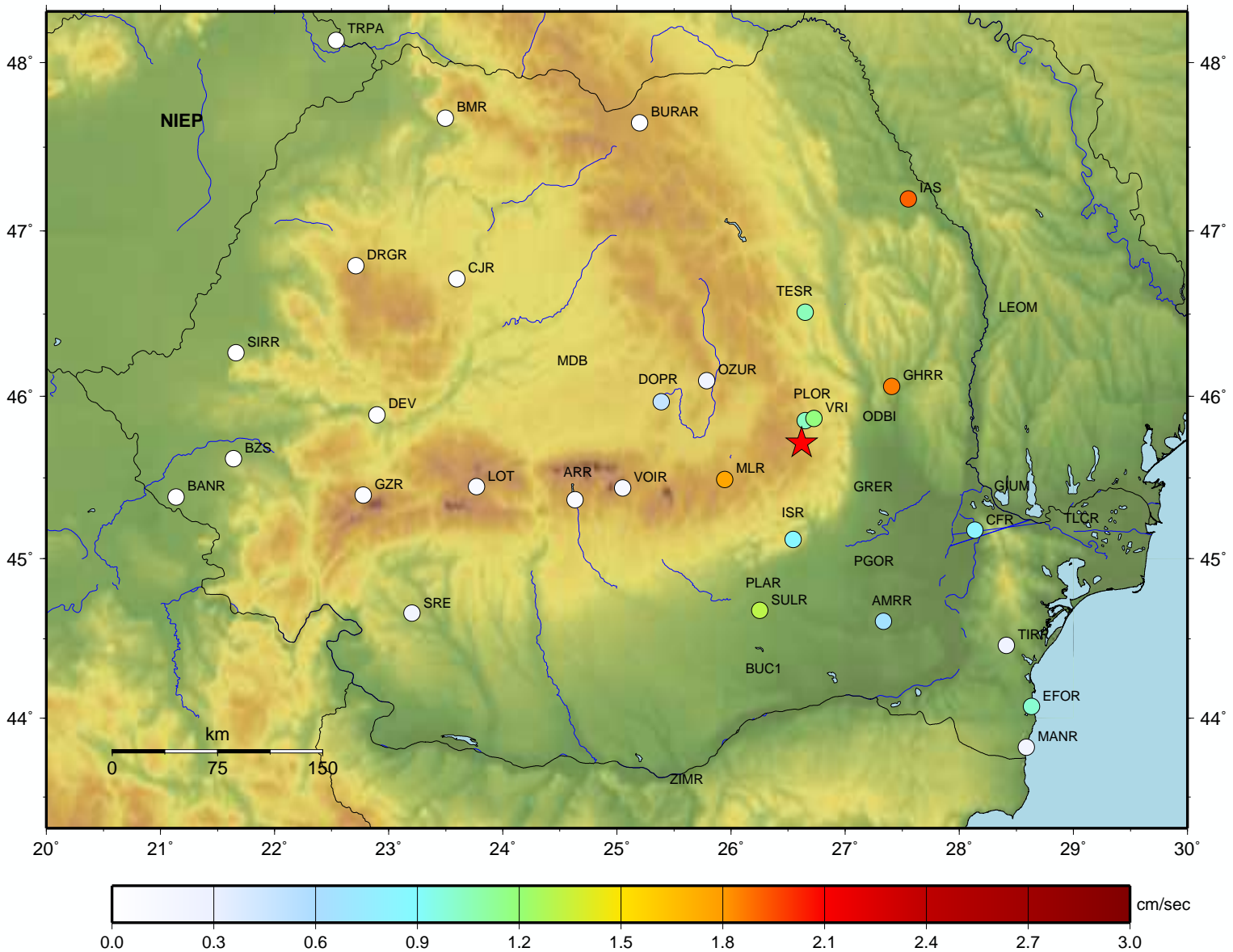
Fri Sep 23, 2016 23:11:20 GMT ML 5.3 N45.71 E26.62 Depth: 91.6km ID:23231120



Observed stations velocities – Antelope platform (cm/sec)

Maximum observed velocity: IAS_HHN 1.9120

Fri Sep 23, 2016 23:11:20 GMT ML 5.3 N45.71 E26.62 Depth: 91.6km ID:23231120



Estimated velocities based on GMPE::VS10 attenuation law

Maximum grid velocity : 1.4306 (cm/sec); magnitude bias: 0.08

Fri Sep 23, 2016 23:11:20 GMT ML 5.3 N45.71 E26.62 Depth: 91.6km ID:23231120

